

Technical Data sheet

Led T5 Tube 0.3, 0.6, 0.9, 1.2, 1.5m



Products Specifications

Light source: SMD2835/LED

Housing: cooler aluminum

Working temperature: -30°C to 65°C

Lifespan: 50,000 hours duty cycle

Input: 85-265V

Frequency: 50HZ/60HZ

Beam Angle: 120°

Lumen up to 110lm/w for milky cover; 120lm/w for clear cover

High CRI of 85

PF>0.95

Power Efficiency: >93%

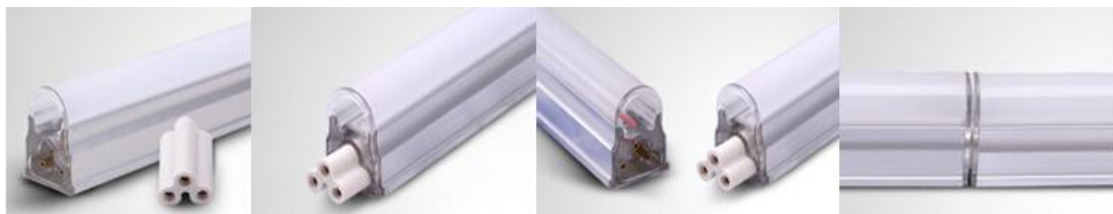
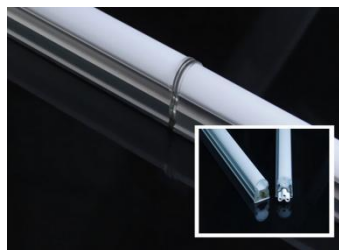
Comparison with Normal LED tube

Structure optimization, strength and heat dissipation is improved significantly;

30% higher in luminous efficiency, 120-130lm/W;

No dark area, No Flickering;

Seamless no shadow connection effect between each other.



Technical parameter

Model	Power	Size (MM)	Input	CCT	Lumen Milk cover	CRI	LED Type	Lighting Angle
ZS-T5i-2835-5W	5W	300	AC20 0-240 V	2700-6500K	110 Lm/w	85	2835 SMD	120°
ZS-T5i-2835-9W	9W	600	AC20 0-240 V	2700-6500K	110 Lm/w	85	2835 SMD	120°
ZS-T5i-2835-14W	14W	900	AC20 0-240 V	2700-6500K	110 Lm/w	85	2835 SMD	120°
ZS-T5i-2835-18W	18W	1200	AC20 0-240 V	2700-6500K	110 Lm/w	85	2835 SMD	120°
ZS-T5i-2835-25W	25W	1500	AC20 0-240 V	2700-6500K	110 Lm/w	85	2835 SMD	120°

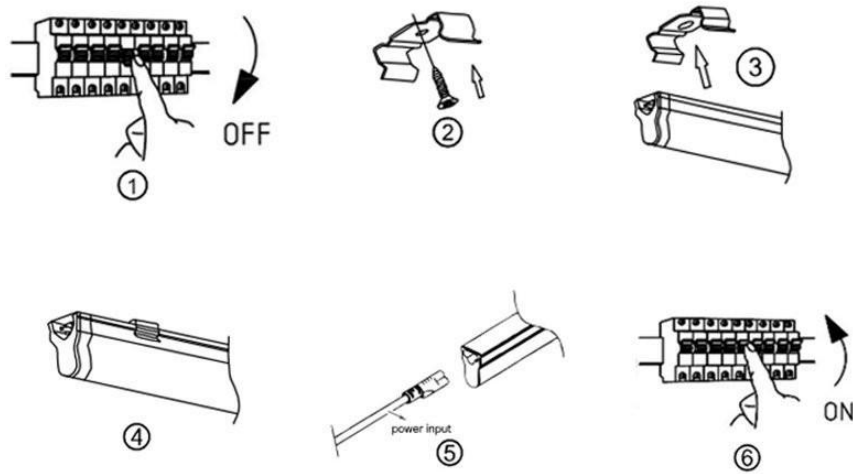
Notes: Tolerance of measurement of luminous intensity±5%

Packing size

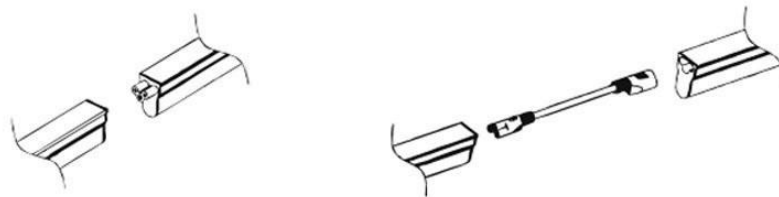
Part NO.	Box type	Outer Carton Size (L×W×H) mm	Qty/Box (pcs)	weight. kg/carton
ZS-T5i-2835-5W	Carton box	380*370*190 mm	50pcs	6.09
ZS-T5i-2835-9W	Carton box	630*370*190mm	50pcs	10.28
ZS-T5i-2835-14W	Carton box	940*370*190	50pcs	12.75
ZS-T5i-2835-18W	Carton box	1230*370*190	40pcs	12.52
ZS-T5i-2835-25W	Carton box	1550*200*220	35pcs	13.33



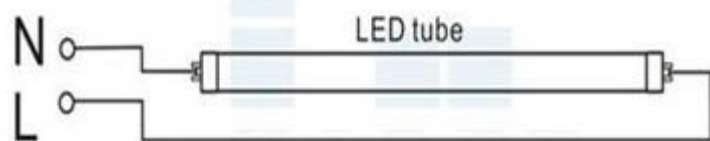
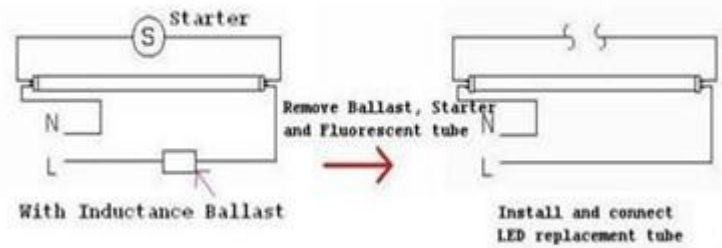
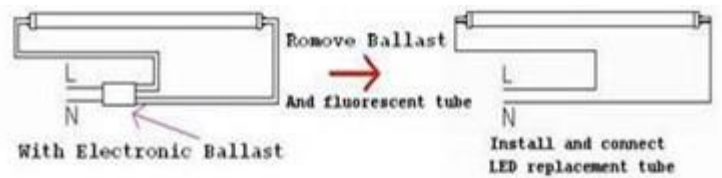
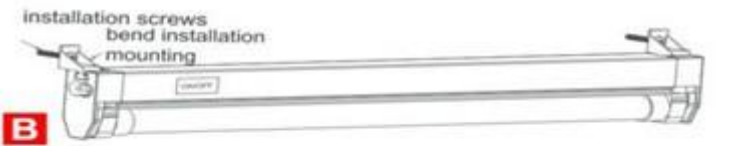
INSTALLATION DRAWING



⚠ When connecting the under cabinet lights in series simply push together or use the connector cable, do not connect more than 6 lights in series.



T5 Installation



Application

1. For home, shopping center and office lighting and decoration of park, stage etc .
2. Task lighting for cabinets, cupboards etc in your homes, restaurants, and kitchens or any other places where accent lighting is required.
3. Display lighting for the articles in your stores and shops
4. Jewellery showcase lighting;
5. Bars, coffee house lighting;
6. Decoration bulbs lamps, ceiling lights, cabinet lighting.



Safety Information

1. Please make sure cut off the power before installation.
2. Please take care of water, electric shock and vibration.
3. Please use the light with standard working voltage, any other voltage is not allowed.
4. Indoor use only.
5. Please read this manual carefully before using.

